

# Neurological Surgery Review Committee Update

Kim J. Burchiel MD, Chair  
Pamela L. Derstine PhD, MHPE  
Executive Director

---

SNS Annual Program Director Meeting  
May 20, 2017  
Houston TX



## Disclosures

---

- None
- The speakers appear on behalf of the ACGME in their respective roles



# Discussion Topics

---

- Review Committee Members and Staff
- Accreditation Statistics
- Site Visits
- Updates
- Common Program Requirements
- The Learning Environment for Neurological Surgery Programs



© 2017 Accreditation Council for Graduate Medical Education (ACGME)

Accreditation Council for Graduate Medical Education

# REVIEW COMMITTEE MEMBERS AND STAFF

---



## Review Committee Membership: Current

---



Kim J. Burchiel, MD,  
**Chair**



Nicholas M. Barbaro, MD, **Vice Chair/Chair-elect**



M. Sean Grady, MD



Griffith R. Harsh IV,  
MD **Vice Chair-elect**



Nickalus Kahn, MD,  
Resident Member



Karin Muraszko, MD



Nelson M. Oyesiku,  
MD, PhD



Harry Rosenbluth,  
MBA, Public  
Member



Gregory Smith, DO



© 2017 Accreditation Council for Graduate Medical Education (ACGME)

## Review Committee Membership: New

---

### Welcome New Members!

Effective July 1, 2017

Sepi Amin-Hanjani, MD  
University of Illinois Chicago

Robert Harbaugh, MD  
Penn State Hershey



© 2017 Accreditation Council for Graduate Medical Education (ACGME)

# ACGME Review Committee Staff

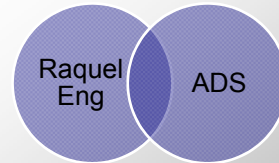
---

Pamela L. Derstine, PhD,  
MHPE

- Executive Director

Susan E. Mansker  
• Associate Executive  
Director

Jennifer M. Luna  
• Senior Accreditation  
Administrator



© 2017 Accreditation Council for Graduate Medical Education (ACGME)

Accreditation Council for Graduate Medical Education

# ACCREDITATION STATISTICS

---



## Accreditation Statistics: Current

---

Total # Accredited Programs	
# Core	110
# Sub	2



© 2017 Accreditation Council for Graduate Medical Education (ACGME)

## Accreditation Statistics: Current

---

Program Accreditation Status (Core)	
Status	# Programs
Continued Accreditation	97
Continued Accreditation w/ Warning	3
Continued Accreditation w/o Outcomes	3
Initial Accreditation	5
Probationary Accreditation	2
Accreditation Withheld (allopathic)	1
Accreditation Withdrawn (under appeal)	1

© 2017 Accreditation Council for Graduate Medical Education (ACGME)

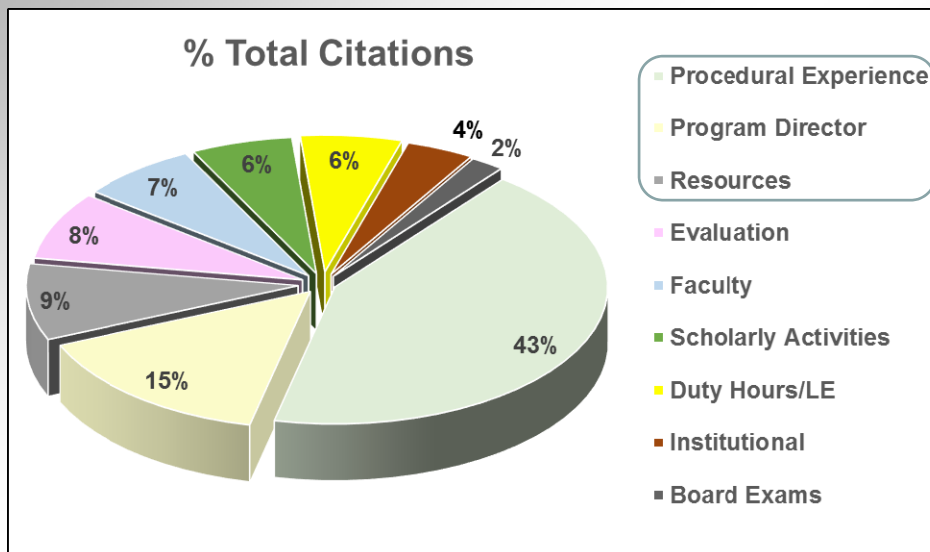
## Accreditation Statistics: AY 2016-2017

Other Meeting Decisions (Core)	
<b>Complement increases</b>	
Permanent: # Requested / #Approved	7/1
Temporary: # Requested / # Approved	3/2
<b>Site Visit Requests</b> (reviewed in April 2017)	
Full	1
Focused	2
<b>Progress Reports Requested</b>	
Will be reviewed January 2018	3
<b>Participating Site Requests</b>	
# Requested / # Approved	12/7
<b>Duty Hour Exception Requests</b>	
# Requested / # Approved	7/7
<b>Other (fellowship, curriculum change, etc.)</b>	
# Reviewed / # Approved	7/7

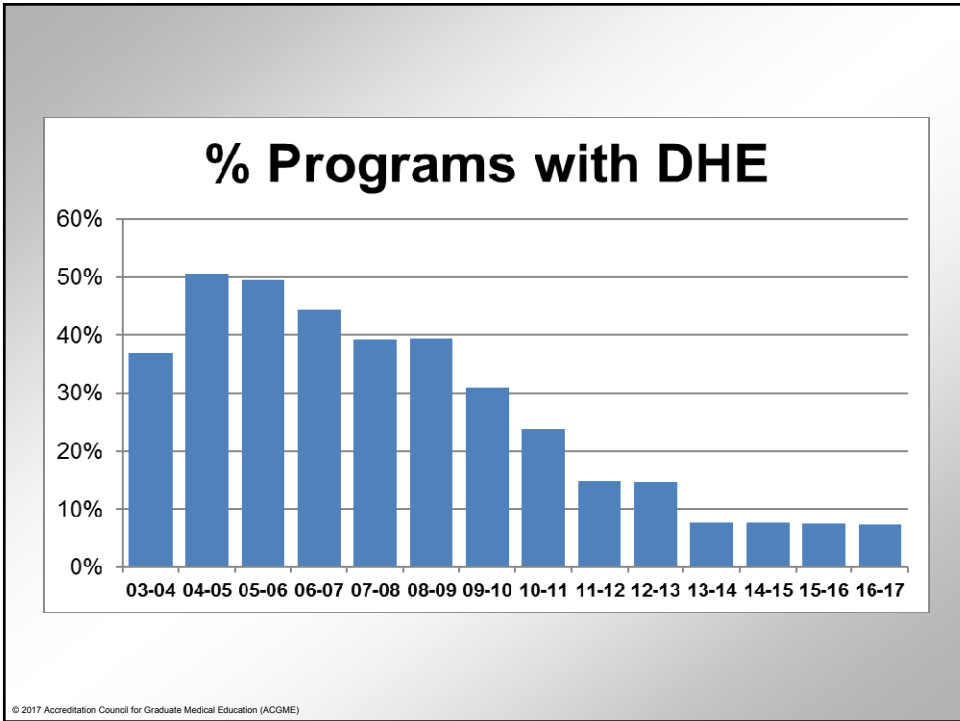
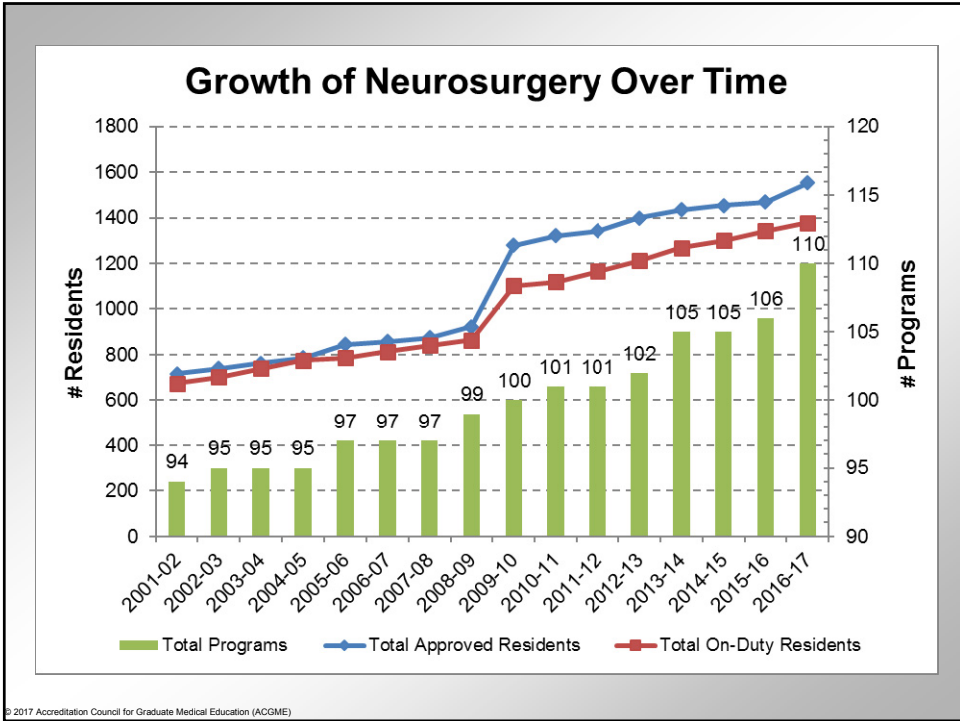


© 2017 Accreditation Council for Graduate Medical Education (ACGME)

## Citation Statistics: AY 2016-2017



© 2017 Accreditation Council for Graduate Medical Education (ACGME)



## Upcoming Review Committee Meetings

---

- **August 3, 2017\***
  - Agenda close: July 6, 2017
- **January 5-6, 2018**
  - Agenda close: October 27, 2017
- **April 6-7, 2018**
  - Agenda close: March 9, 2018
- **Fall 2018 TBD**

\* Interim requests only:  
complement changes  
participating site changes  
curriculum changes  
international rotations

© 2017 Accreditation Council for Graduate Medical Education (ACGME)



Accreditation Council for Graduate Medical Education

## SELF-STUDY AND 10-YEAR SITE VISITS

---





# Self-Study/10-Year Site Visit

---

All programs with Continued Accreditation status have an assigned Self-Study date

- Month/year when completed Self-Study uploaded to ADS
- Assigned dates July 2015-January 2025
- **21** programs have submitted a Self-Study report to date

10-year accreditation visit takes place 18-24 months later

- Pilot visits occurring now
- First 10-year accreditation visits for neurosurgery programs that submitted Self-Study in 2015 (**4**) planned for this summer
- Site visit reports from those visits will be included in the annual program reviews next year (2018)

© 2017 Accreditation Council for Graduate Medical Education (ACGME)



# Self-Study/10-Year Site Visit

---

## Process Overview

- Conduct a Self-Study (4 months preceding Self-Study date)
- Submit the Self-Study Summary (improvement plan) by Self-Study date
- Work on improvement plan (next 18-24 months)
- Submit Summary of Achievements (12 days before 10-year site visit)
- Full site visit includes compliance review and discussion of improvement achievements
- Review Committee reviews compliance for accreditation decision and summary of achievements as informational item (may provide feedback)

© 2017 Accreditation Council for Graduate Medical Education (ACGME)



## 10-Year Visit: A Full Accreditation Site Visit

---

Self-Study Date	Summary Due	Approximate Site Visit Date	Review Committee Review
7/1/2015	7/31/2015	July-Aug 2017	January 2018
1/1/2016	1/31/2016	Jan-Feb 2018	April 2018
7/1/2016	7/31/2016	July-Aug 2018	January 2019
1/1/2017	1/31/2017	Jan-Feb 2019	April 2019

© 2017 Accreditation Council for Graduate Medical Education (ACGME)



## 10-Year Visit: A Full Accreditation Site Visit

---

**Requests to postpone must be received with 5 calendar days of notice**

### Sources of information

- ADS Update (citation responses, major changes, current block diagram)
- Self-Study Summary (uploaded in ADS)
- Summary of Achievements (uploaded in ADS)

© 2017 Accreditation Council for Graduate Medical Education (ACGME)



# Self-Study Templates

---

<http://www.acgme.org/What-We-Do/Accreditation/Self-Study>

## Self-Study Summary

- Uploaded to ADS on the Self-Study due date

## Self-Study Summary of Achievements

- Uploaded to ADS 12 days before scheduled 10-year site visit date

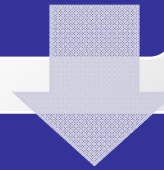


© 2017 Accreditation Council for Graduate Medical Education (ACGME)

## 10-Year Visit: A Full Accreditation Site Visit

### Prior to site visit:

- Faculty will be asked to prepare a consensus list of program strengths and opportunities for improvement and send it to the site visitor
- Residents will be asked to prepare a consensus list of program strengths and opportunities for improvement and send it to the site visitor
- Prepare list of documents for review at site visit per notification letter



### During the site visit:

- Separate interviews with the program director, faculty, residents, and DIO or designee
- If less than 15 residents, all residents on duty will be interviewed
- If more than 15 residents, a minimum of 15-18 **peer-selected** residents will be interviewed
- Site visitors will indicate the interview format to be used

© 2017 Accreditation Council for Graduate Medical Education (ACGME)

# UPDATES

---



## Osteopathic Application Status

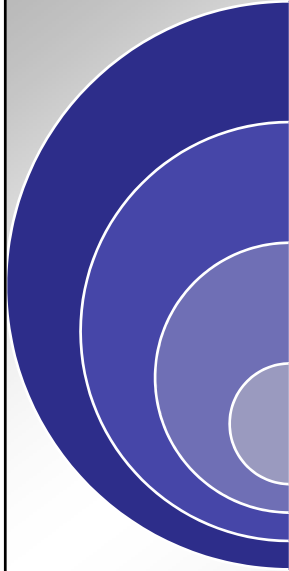
---

- Surgical Program Status Decisions as of 5/17/17

Specialty	Pre-Accreditation	Continued Pre-Accreditation	Initial Accreditation
Neurological Surgery	0	6 (75%)	2 (25%)
Obstetrics Gynecology	2	10 (39%)	16 (61%)
Ophthalmology	0	4 (80%)	1 (20%)
Orthopaedic Surgery	0	35 (85%)	6 (15%)
Otolaryngology	1	13 (93%)	1 (7%)
Plastic Surgery	0	2 (100%)	0
Surgery	7	33 (70%)	14 (30%)
Urology	0	3 (30%)	7 (70%)

# Milestones Survey

---



Revised “common” milestones for PBLI, professionalism, interpersonal and communication skills, and SBP

Broad public and specialty input requested

Survey window through 6/7/2017

<https://www.surveymonkey.com/r/HarmonizedMilestones>

© 2017 Accreditation Council for Graduate Medical Education (ACGME)

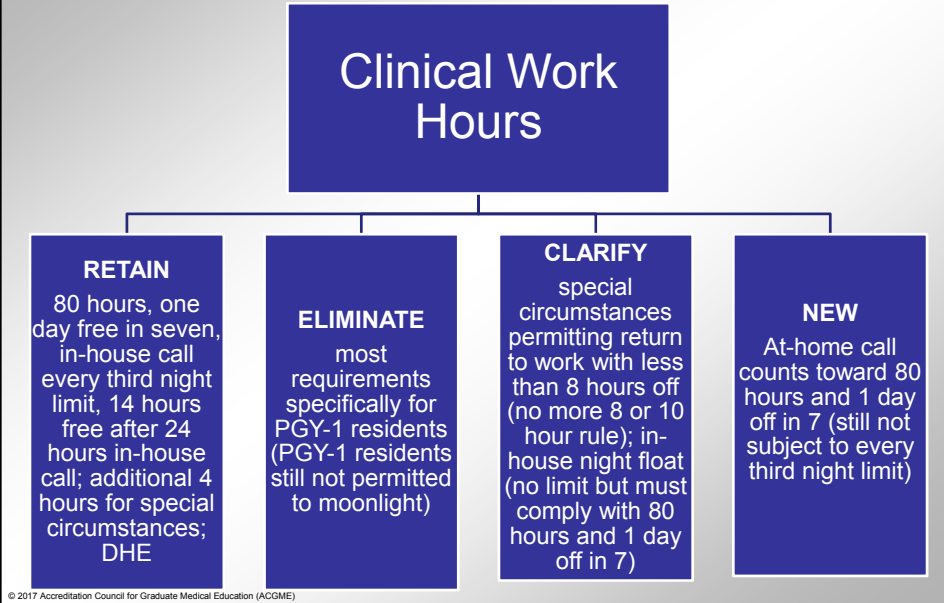
Accreditation Council for Graduate Medical Education

## PROGRAM REQUIREMENTS: COMMON AND SPECIALTY- SPECIFIC

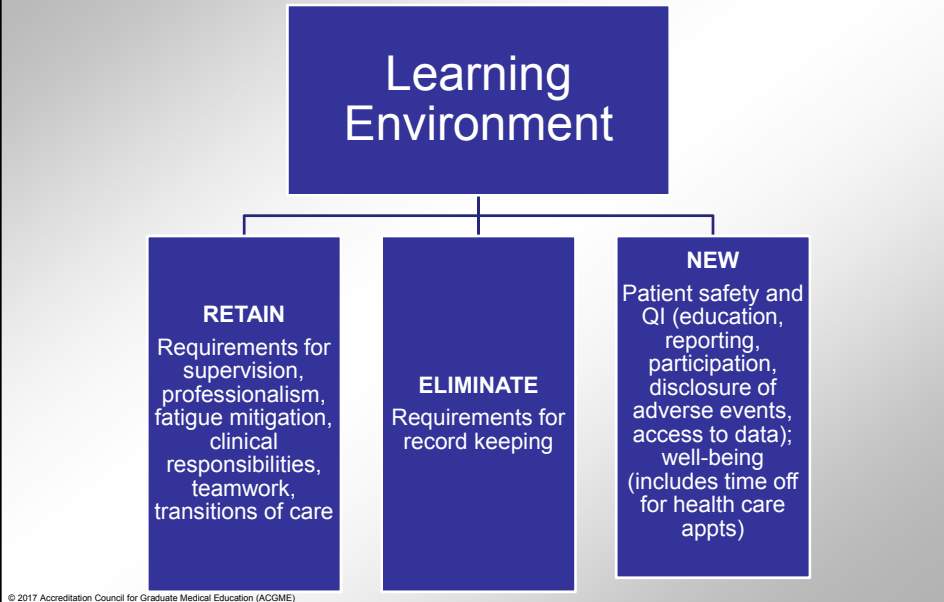
---



## Common Program Requirements: Section VI



## Common Program Requirements: Section VI



## Common Program Requirements: Section VI

---

- programs as partners with their Sponsoring Institution
- flexibility in educational and clinical work scheduling
- individual and program responsibility over documentation requirements

Emphasizes



© 2017 Accreditation Council for Graduate Medical Education (ACGME)

## Common Program Requirements: Section VI

### Implementation Timeline

- July 1, 2017 for most, including VI.C.2 under patient safety
  - Survey language updated in 2018 for work hours and in 2019 for learning environment
- July 1, 2019 for patient safety (except VI.C.2), quality improvement, and well-being
  - AFIs but no citations may be given before 7/1/2019

Website: [www.acgmecommon.org](http://www.acgmecommon.org)

© 2017 Accreditation Council for Graduate Medical Education (ACGME)

## Common Program Requirements: Sections I-V

---

### Proposed Timeline

- Phase 2 Task Force began work: fall 2016
- Post for public comment: fall 2017
- Board review/approval: 2018
- Effective: 2018 or 2019

© 2017 Accreditation Council for Graduate Medical Education (ACGME)



Accreditation Council for Graduate Medical Education

## THE LEARNING ENVIRONMENT FOR NEUROLOGICAL SURGERY PROGRAMS

---





## Goal of Neurological Surgery Resident Education

---

Acquire knowledge and skills for safe and effective practice

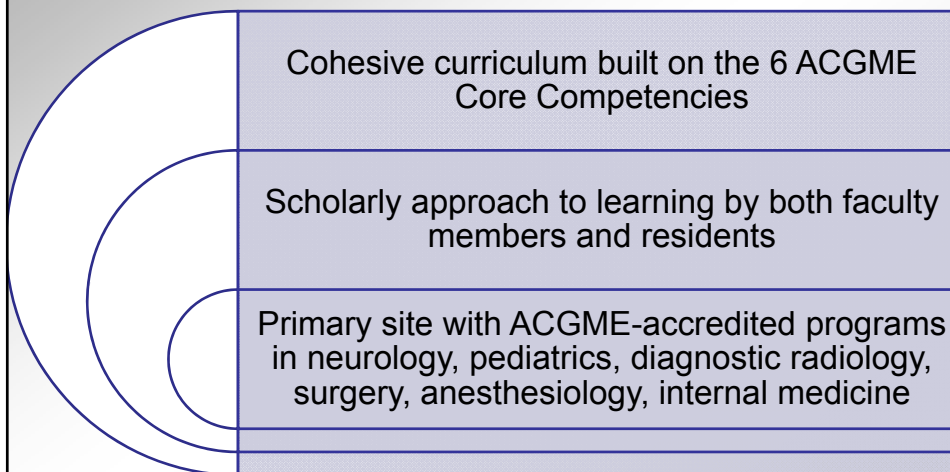
- Develop technical proficiency
- Abilities for self-analysis of practice
- Preparation for life-long continuous quality improvement

© 2017 Accreditation Council for Graduate Medical Education (ACGME)



## Program Elements

---



© 2017 Accreditation Council for Graduate Medical Education (ACGME)



## Program Elements

---

May approve a primary site that lacks one of these specialty areas. Requires educational rationale to include:

- Educational opportunities proposed as a remedy for the deficiency in training
- How the proposal overcomes the deficiency
- Methods by which atmosphere of learning will be fostered and maintained by the program

© 2017 Accreditation Council for Graduate Medical Education (ACGME)



## Negative Impact of Geographically Dispersed Programs

---

### Resident Well-being

- Disrupt living arrangements
- Increase demands on resident's family and friends
- Reduce quality time away from work (rest, travel, recreation)
- Disrupt cohesiveness of faculty/resident team
- Variable levels of institutional support for travel, housing, insurance

© 2017 Accreditation Council for Graduate Medical Education (ACGME)



## Negative Impact of Geographically Dispersed Programs

### Diminishes integrity of educational environment

- Conference participation
- Mentoring relationships
- Faculty-directed scholarly activity
- Institutional quality improvement activities
- Team approach to resident education

### Compromises patient safety

- Inadequate supervision due to insufficient faculty availability, inexperience, or lack of dedication to GME



© 2017 Accreditation Council for Graduate Medical Education (ACGME)

## Key Program Features

Single primary site that offers most or all core elements critical for education

Additional sites permitted that offer specialty experiences for a comprehensive education

Should be limited to no more than 5 separate health care facilities

- Must ensure an appropriate service-education balance
- Must have ACGME-accredited program in the specialty area that is the focus of the rotation(s)
- Should be located less than 25 miles from primary site (exceptions may be granted following review by the Review Committee)

© 2017 Accreditation Council for Graduate Medical Education (ACGME)